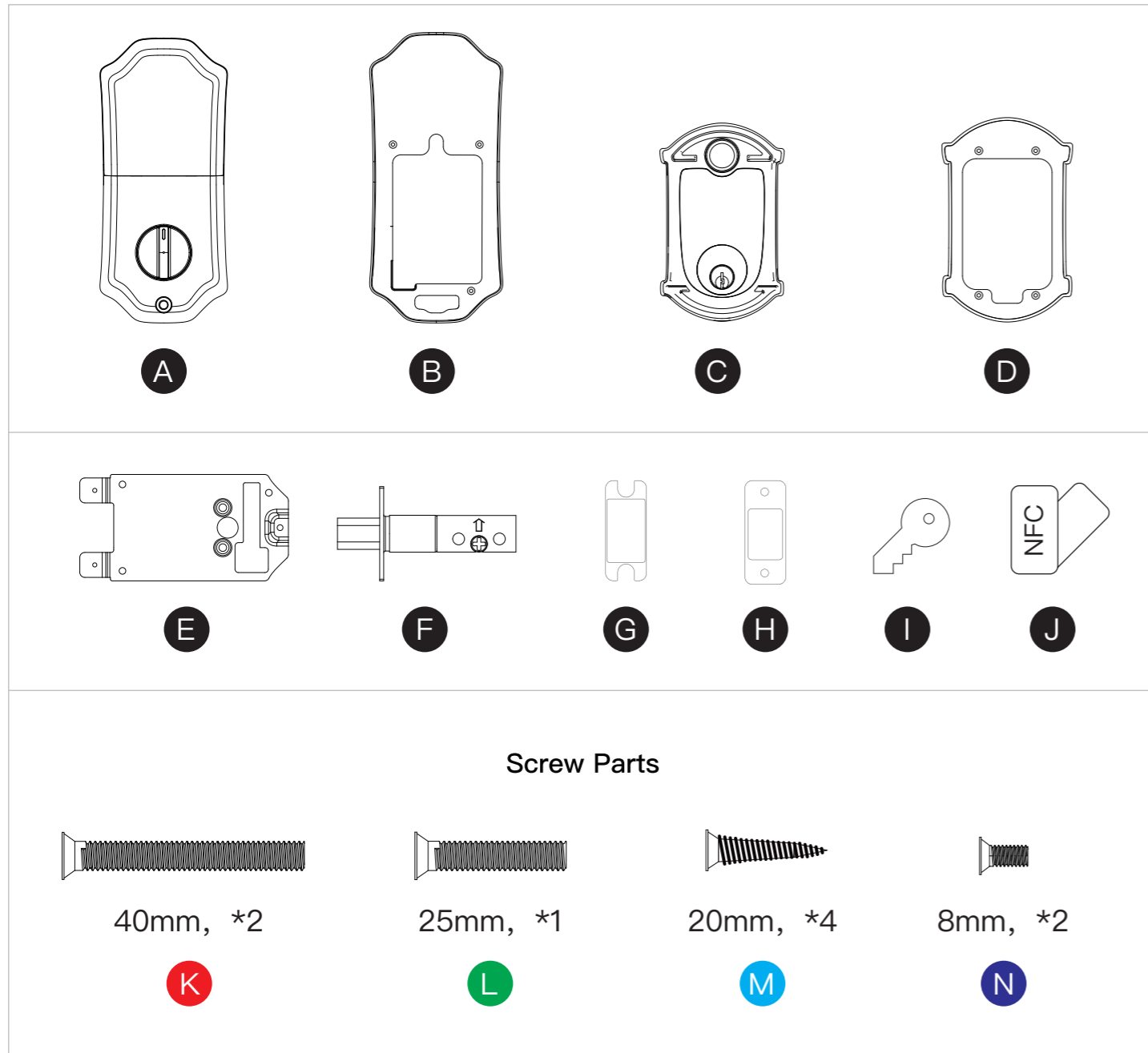
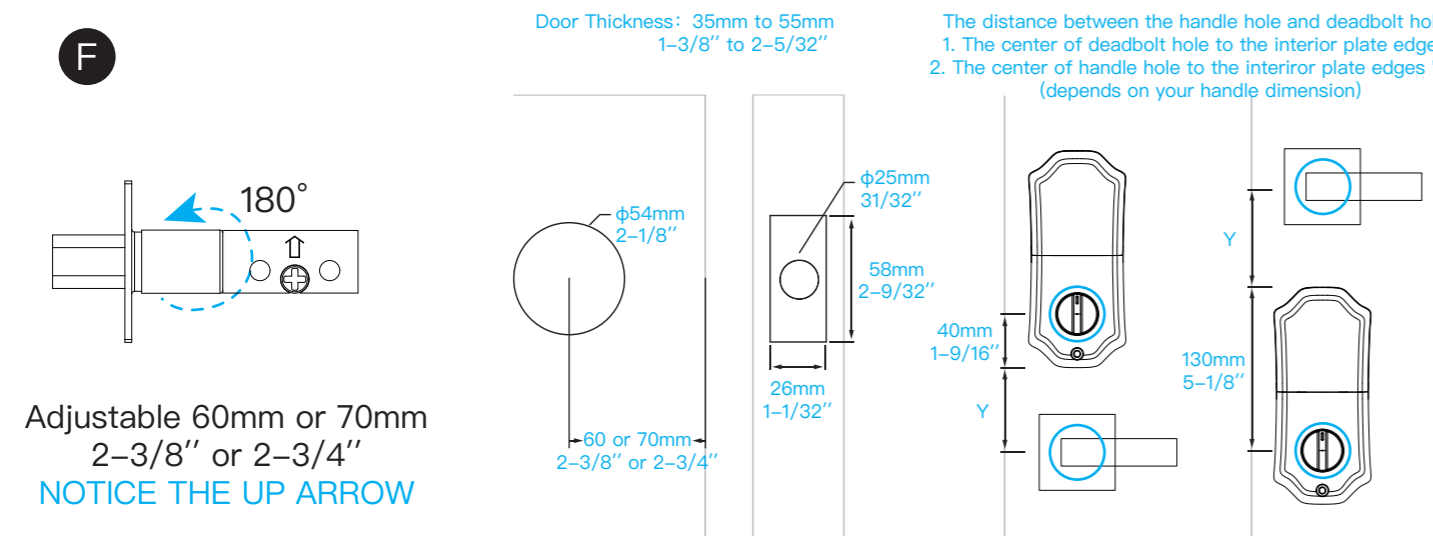
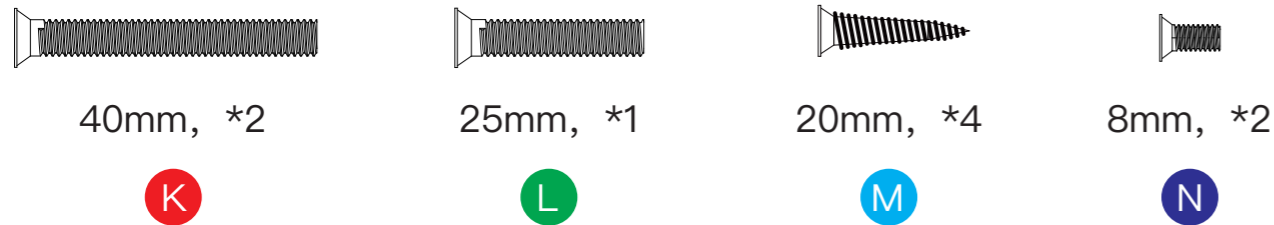


# Model:UF02 SMART LOCK

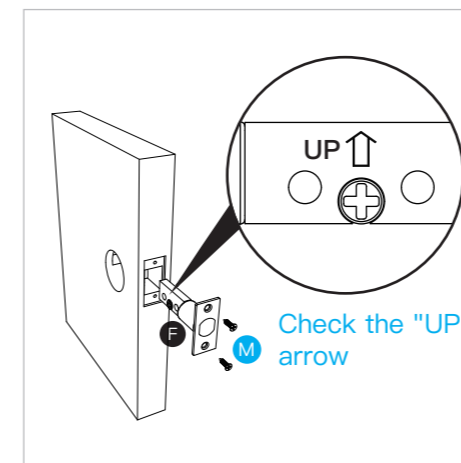
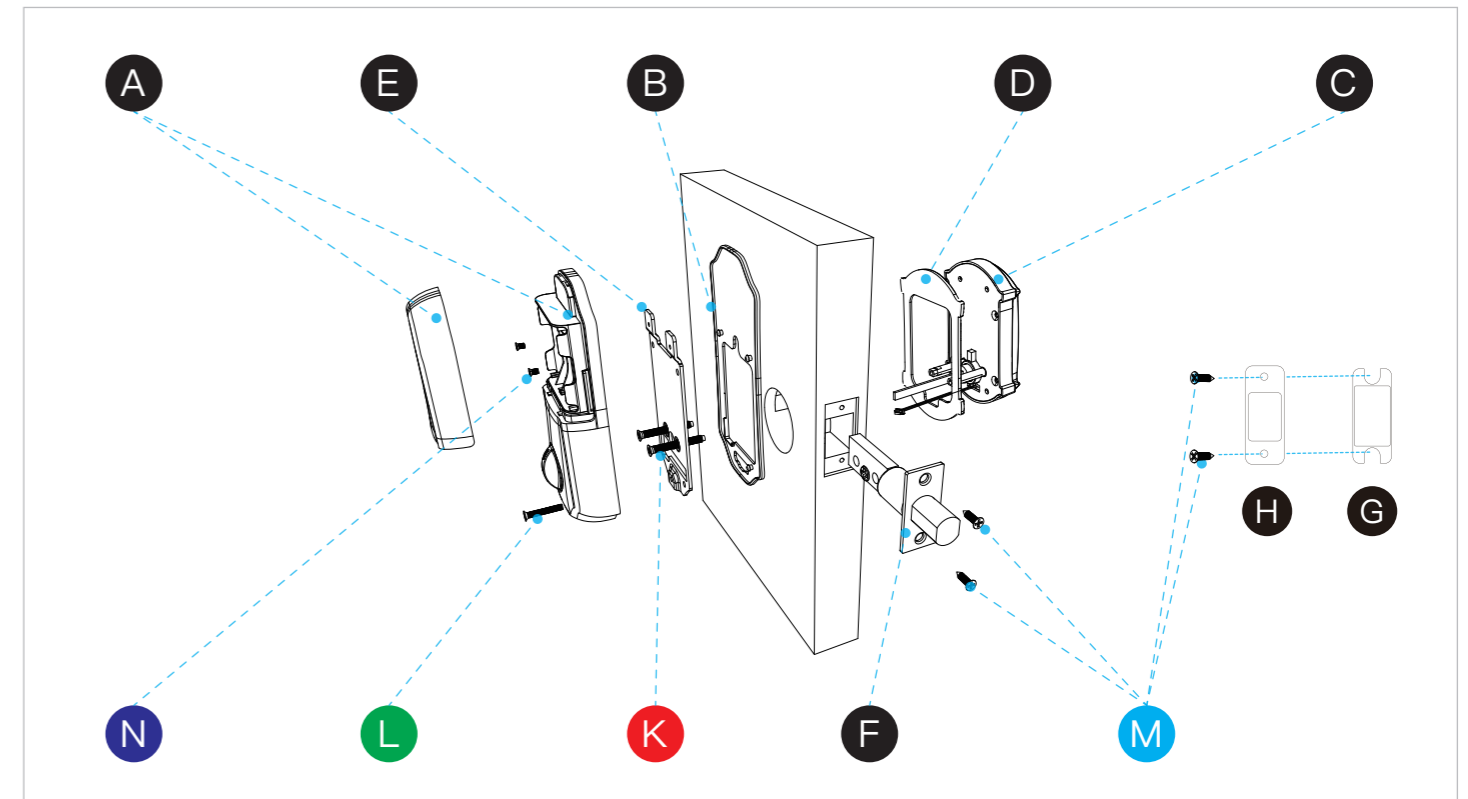
## PARTS LIST



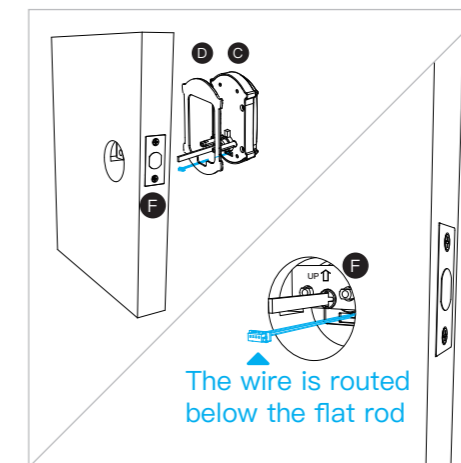
### Screw Parts



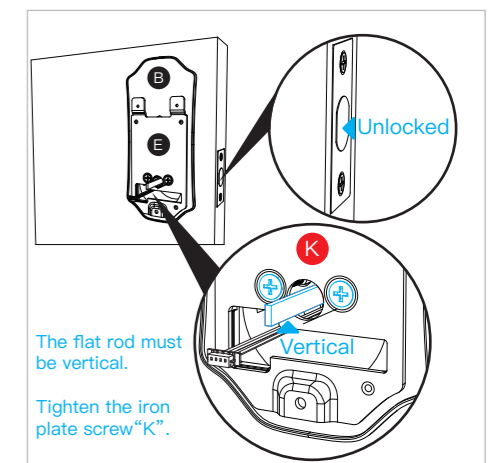
## How To Install



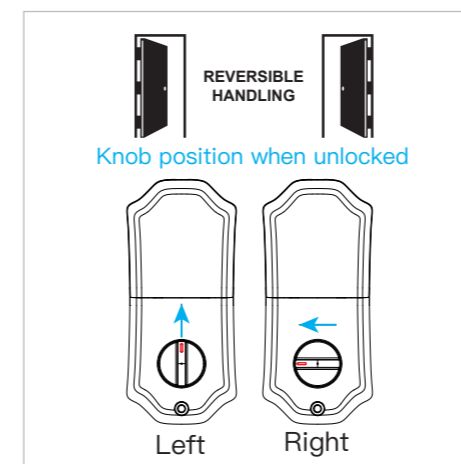
1.Installation of deadbolt



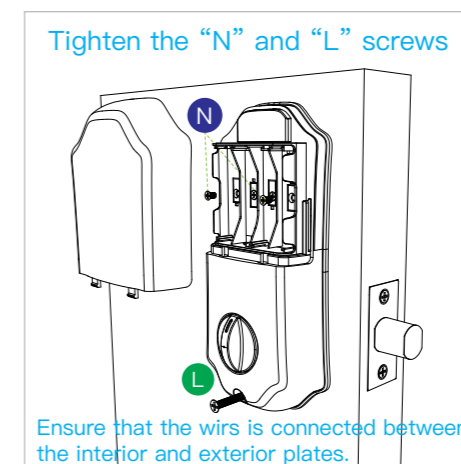
2.Installation of exterior plate



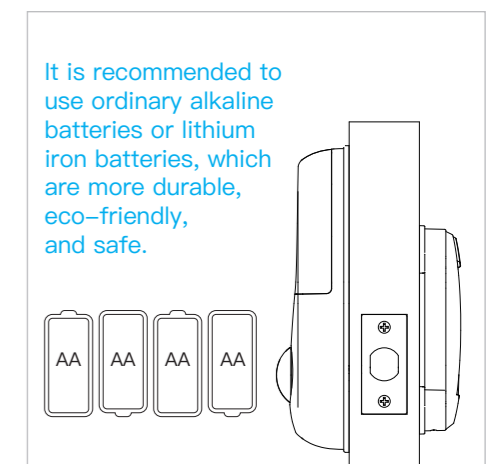
3.Installation of interior plate



4.Left/Right hand open/swing door



5.Secure the interior plate



6.Install battery

# The App Manual

Download



We suggest you use your own account to add a device. In order to protect your safety, the device is bound to the account. Even if you use the reset button, you can't unbind it unless you remove the device in app. If you need more than one person to use this device, please share permissions through the member management in the device settings, thank you.

1. Before start, install and power on the lock correctly
2. Login TuyaSmart
3. Turn on the bluetooth on your phone ⚠ Bluetooth 4.0 or above needed
4. In TuyaSmart Home Page, press the "Add Device" button or "⊕"
5. Wait the addable device to show

## 6. Add the Lock (Password / Fingerprint / Card)

Press "⊕" to add the lock

## 7. Set the Lock(in the Smart Lock Page)

### 7.1 Set motor rotation direction

Get in the Set Page

Find motor rotation direction

Right hand open/swing door:

anticlockwise unlock or Counterclockwise

Left hand open/swing door:

clockwise unlock

## 8. Set Password / Fingerprint / Card

Get in Set Page

Press the Button Above and set

## 9. Share the permission

Get in Member management Page

Share your permission to others

## The Unlock Ways

1. Fingerprint
2. Card
3. Key
4. Knob
5. Keypad Password then "#"
6. TuyaSmart App unlock \*

## The Lock Ways

1. Key
2. Knob
3. Long press "#" on Keypad
4. Auto lock(optional, config in lock's setting page [automatic lock switch])

\* Can't work when unlock by key or knob

## Usage Scenario

### A. When you enter the door

1. Password unlock
2. Bluetooth App unlock \*

### B. When you go out

1. Long press "#"
2. Bluetooth App lock \*
3. Auto lock

### C. When someone comes

1. Turn the knob to unlock
2. Bluetooth App unlock \*

### D. When someone needs a single unlock

1. Set in App, slide to obtain dynamic password \*

### E. You are the landlord or you want to share the permission

1. Check the member management in app and add members

### F. You no longer use this lock, and others use your lock

1. No need to reset, in app main page, press and hold to remove the device

\*Please make sure your phone's Bluetooth is connected to the device.

#### FCC Statement

This equipment has been tested and found to comply with the limits for a Class B digital device, pursuant to part 15 of the FCC rules. These limits are designed to provide reasonable protection against harmful interference in a residential installation. This equipment generates, uses and can radiate radio frequency energy and, if not installed and used in accordance with the instructions, may cause harmful interference to radio communications. However, there is no guarantee that interference will not occur in a particular installation. If this equipment does cause harmful interference to radio or television reception, which can be determined by turning the equipment off and on, the user is encouraged to try to correct the interference by one or more of the following measures:

- Reorient or relocate the receiving antenna.
- Increase the separation between the equipment and receiver.
- Connect the equipment into an outlet on a circuit different from that to which the receiver is connected.
- Consult the dealer or an experienced radio/TV technician for help.

To assure continued compliance, any changes or modifications not expressly approved by the party.

Responsible for compliance could void the user's authority to operate this equipment. (Example- use only shielded interface cables when connecting to computer or peripheral devices).

This equipment complies with Part 15 of the FCC Rules. Operation is subject to the following two conditions:  
(1) This device may not cause harmful interference, and  
(2) This device must accept any interference received, including interference that may cause undesired operation.

#### FCC Radiation Exposure Statement:

The equipment complies with FCC Radiation exposure limits set forth for uncontrolled environment. This equipment should be installed and operated with minimum distance 20cm between the radiator and your body.